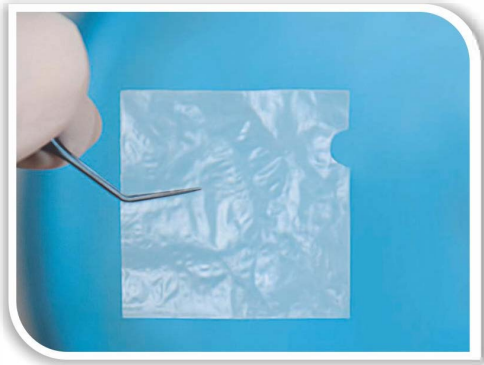
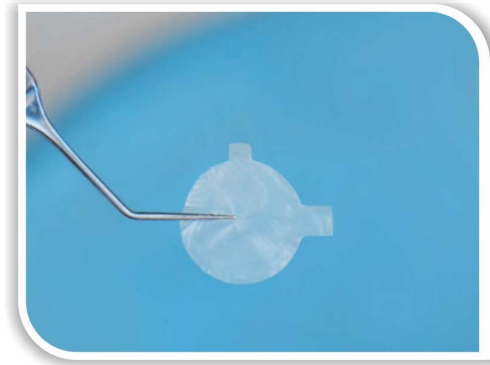


Front



**Amnio-care™**

(30x30 mm square)



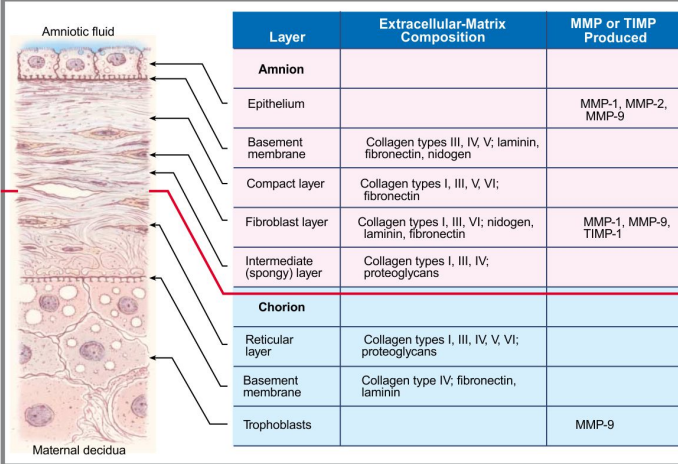
**Amniocare™-D**

(12 mm disc)

Introducing **Amnio-care™** & **Amniocare™-D** Processed Human Amniotic membrane representing the latest in regenerative biologics technology for the ocular surface

***A quick heal Bio-bandage***

## STRUCTURE :



Layer	Extracellular-Matrix Composition	MMP or TIMP Produced
<b>Amnion</b>		
Epithelium		MMP-1, MMP-2, MMP-9
Basement membrane	Collagen types III, IV, V; laminin, fibronectin, nidogen	
Compact layer	Collagen types I, III, V, VI; fibronectin	
Fibroblast layer	Collagen types I, III, VI; nidogen, laminin, fibronectin	MMP-1, MMP-9, TIMP-1
Intermediate (spongy) layer	Collagen types I, III, IV; proteoglycans	
<b>Chorion</b>		
Reticular layer	Collagen types I, III, IV, V, VI; proteoglycans	
Basement membrane	Collagen type IV; fibronectin, laminin	
Trophoblasts		MMP-9

The human amnion is composed of five distinct layers. It contains no blood vessels or nerves. The various layer secrete different types of collagen Type IV, V & VII which are present in Extracellular Matrix (ECM). It also has abundant content of specialized proteins such as fibronectin, laminins proteoglycans & glycoproteins which give amniotic membrane is unique healing properties. Also, presence of various growth factors such as Epidermal Growth Factor (EGF), Fibroblast Growth Factor (FGF), TGF- $\beta$  promote healing & growth in the effected area.

## INHERENT PROPERTIES OF AMNIOTIC MEMBRANE :

- Promotes and maintains epithelization
- Anti-infective properties
- Reduces scarring
- Reduces inflammation
- Reduces vascularisation

## ADVANTAGES OF DRY AMNIOTIC MEMBRANE :

- Can be stored at room temperature
- No need for cold chain
- The product is gamma sterilized, so the sterility is assured
- Easy to handle and suture/glue to the lesion
- Can be cut in different size and shape so as to conform to the lesion
- Long shelf life of three years

## SAFETY AND STERILITY :

Amnio-care™ amniotic tissue meets the most stringent donor screening and serological testing standards to ensure safety. Amnio-care™ is delivered sterile, dry and with a 3 year room-temperature shelf-life greatly reducing storage and shipping logistical costs incurred by other frozen allograft technologies.

## OPHTHALMIC INDICATIONS :

### Amnio-care™

- Pterygium surgery
- Chemical burns
- Cicatrizing conjunctivitis
- Leaking blebs
- Ocular surface squamous neoplasia (OSSN)
- Symblepharon release
- Fornix formation
- Socket reconstruction
- Conjunctivochalasis

### Annio-care™-D

- Neurotrophic ulcer/cornea
- Bullous keratopathy
- Band keratopathy
- Total LSCD
- Conjunctivochalasis
- Cicatrizing conjunctivitis
- PEDs
- Partial LSCD
- Non-healing stromal ulcers
- Dry eye

## Recommend by Ophthalmologists...



**Amniocare-D** Dry Amniotic Membrane has given significant clinical benefits to my patients. We have used it with great success in host of ulcerous conditions with good results. Its long shelf life and easy storage makes it ideal for all clinical settings.

**Dr Ashok Sharma, MS (PGIMS)** Director, Dr Ashok Shrama Cornea Center , Fellow Eye Consultants of Maryland(USA), LVPEI



Among the various treatment for ocular surface diseases, my choice has been **Amnio-care** due to its safety, fast action and ease of use. It has served my patients well with good results. Its ease of use and storage has made it essential part of my practice.

**Dr Syed Maaz Mohiuddin, MS DNB** FRCS(Glasgow)

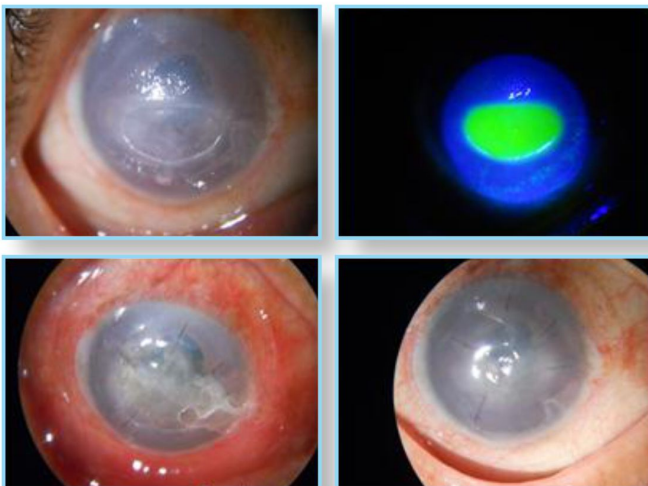


I am impressed by the flexibility of Biocover's amniotic membrane products. They have been useful in pterygium, wound repair, ulcers and many other problems. Its ease of use, long shelf life makes it ideal choice for use in surgery.

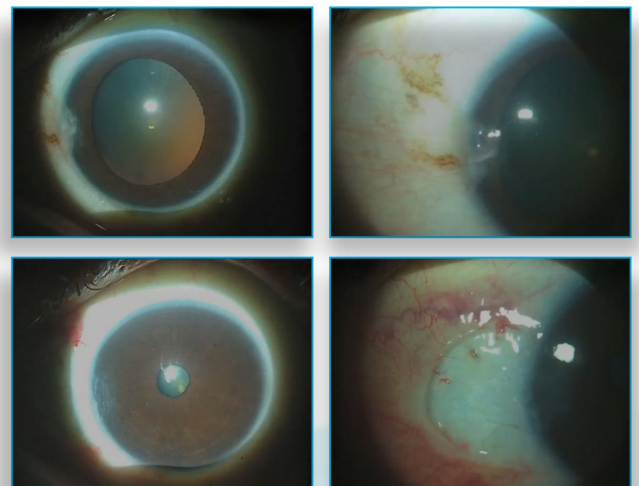
**Dr Milind Bhide, MS** FRCS(Edinburgh) FRCOphth(london)

## PROVEN RESULTS

### Neurotrophic Ulcer



### Pterygium



## FREQUENTLY ASKED QUESTIONS :

### Amnio-care™

**Q1. : What is the size of membrane ?**

Ans : The size of each piece of Amnio-care™ is 3x3 cm, one box of Amnio-care™ has one such piece.

**Q2. : What side is the stromal side of the membrane(the side to be put on the cornea) ?**

Ans : There is a cut on upper right side of membrane indicating the correct orientation of the membrane to be put on cornea. If the membrane is held in such a way that cut edge points to the right and away from the surgeon, stromal side is facing the cornea & epithelial side is towards the surgeon.

**Q3. : What is the shelf life of Amnio-care™ ?**

Ans : The shelf life of Amnio-care™ is three years in the box. Once the box is opened it has to be used the same day.

**Q4. : Is it possible to re-sterilize the membrane once the box is open ?**

Ans : No, The membrane cannot be re-sterilized after the packing is open, as sterility is lost once the box is open.

**Q5. : Is it possible to use Amnio-care™ in more than one patient ?**

Ans : It is recommended that one piece of Amnio-care™ be used in one patient only, but it is possible to use in more than one patient if the surgeries are done on the same sitting and in the same sterile field (i.e same Operating Room).

### Amniocare™-D

**Q1. : What is the size of disc ?**

Ans : Each disc of AmnioCare™-D is 12 mm in diameter, one box of AmnioCare™-D has one such piece.

**Q2. : What side is the correct orientation of the disc ?**

Ans : When the disc is held in such a way that the bigger projection is clock-wise to the smaller one, the epithelial side faces the cornea.

**Q3. : What is the shelf life of AmnioCare™-D ?**

Ans : The shelf life of AmnioCare™-D is three years in the box. Once the box is opened it has to be used in the same sterile field.

**Q4. : Is it possible to re-sterilize the disc once the box is open ?**

Ans : No, the disc cannot be re-sterilized after the packing is open, as sterility is lost once the box is open.

**Q5. : Is it possible to use AmnioCare™-D in more than one patient ?**

Ans : No, it cannot be used be more than one patient.

## ORIENTATION :



The cut should face to the right & away from the surgeon for correct orientation



When the disc is held in such a way that the bigger projection is clock-wise to the smaller one, the epithelial side faces the cornea

